

**Southgate Medallion  
Family Day Homes**

#209, 11 Fairway Drive  
Edmonton, Alberta T6J 2W4  
Phone: 780 438-4012  
Fax: 780 435-6605  
info@southgatemedallion.com  
www.southgatemedallion.com

**ANNOUNCEMENTS &  
UPCOMING EVENTS**

**Family Day  
Monday, February 21st  
Office Closed**

**Timesheets are due  
Monday, February 28th  
Fax your timesheet one  
page at a time to ensure  
it is readable.**

**Multicultural  
Toy Kit**

Orders are due so if you still plan to buy a toy kit submit your payment and doll choice to your consultant. Make your \$60.00 cheque out to the agency.

**Self Assessment**

forms are due. If you have not completed yours yet please do so and get it to your consultant as soon as you are able.

**Provider  
Anniversaries:**

The following Providers opened their day homes in February of the year listed:

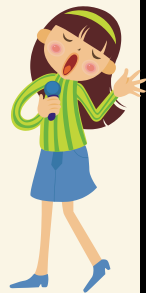
Mussarat	2006
Abbasi	5 yrs
Marie	1996
Krosova	15 yrs

Congratulations! Thank you for your dedicated work with the children and families in care.

***Come Play With Me!***



*Games, finger plays and songs* are not only fun but provide a great opportunity to support emergent literacy. Research shows that play is a very powerful yet safe way to acquire new skills for both child and adult alike. This hand-on workshop will explore the learning that happens when we give children the chance to play.



**Saturday, March 12**

**10:00-12:00**

South West Neighbourhood  
Centre in Ermineskin  
3058 106 Street

**Presenter: Wendy Peverett**  
**Wendy is the Co-ordinator**  
**at the**  
**Family Literacy Center**

*Please call the office to sign up for this exciting workshop!*

Providers should spend a minimum of 8 hours per year on professional development training to stay current and refresh your interest in child care issues.

**Winter Blues Book Sale**

Stanley A. Milner Library  
(downstairs)

Feb 4—9am-8pm  
Feb 5—9am—5 pm  
Feb 6 1pm—3 pm  
Hardcover books, DVD's 2.00  
Paperbacks and Children's books  
1.00  
Sunday Box Sale \$10.00  
More info at epl.ca



**19th Annual  
Provider Caring that Counts 2011 Con-  
ference**

**"Living Colours and Colourful Lives"**

**Saturday April 9th**

**Radisson Hotel**

**4440 Gateway Boulevard**

**Fee: \$100.00**

Registration forms and fees are due in the agency on Fri, Feb 25th so we can submit as a group on March 4th.

The Provider Conference is an opportunity to meet other providers and take home information you can use in your day home.

## Choosing Children's Literature

### Books:

- Teach children about the world around them to help them relate to the world they live in.
- Lead children into a world of imagination.
- Enable children to learn new words and expand their vocabulary.
- Stimulate language development.
- Teach early concepts of reading such as, which way to hold the book, how to turn the page and to read print from left to right.



### WHAT TO LOOK FOR IN GOOD QUALITY BOOKS

1. Choose books based on the interest and the ages of the children. Select a book that the children can relate to in some ways and one that they will enjoy. Most importantly, we must choose the right book for the right child in the right situation. It should be a book that has "high literary merit" and one the child enjoys. ( Kurkjian ,2005).



and setting of the story.

2. The illustrations must be visually appealing and should support the text. The illustrations must be according to the plot, characters

3. The book must have an anti-bias theme/plot and should reflect diversity, so that children can learn to respect others as well as themselves.



### Things to keep in mind when choosing books:

#### STORY

Is the story interesting?  
 Will the children enjoy the story?  
 Is it age appropriate ? [ not too long or short ]  
 What is the plot? What is the story about and is it age appropriate.  
 What are some things that the children can explore through the story?  
 Does the story encourage discussion and thinking?



#### CHARACTERS

Do the characters depict people in non-stereotypical roles?  
 Do the characters represent people from different cultures and people with different abilities etc.



#### ILLUSTRATIONS

Are the illustrations accurate to the plot, characters and the setting of the story?  
 Do the illustrations support the text?  
 Do the pictures depict diversity and diversity within cultural groups?  
 Do the pictures/illustrations avoid reinforcing societal stereotypes?  
 Does the story reflect a variety of settings?

#### THEME

What is the theme of the story or the book?  
 What will children learn from the story ?  
 What values will be highlighted in the story such as respect, honesty.

#### SETTING

What is the setting of the story?  
 Are cultural settings represented realistically?



## Re-Accreditation Standard 1 Review

In January, consultants worked on Standard 1 with each provider. This section covered health and safety standards. Providers are required to know the current health and safety standards as listed in the Family Day Home Standards Manual. Additional reading regarding standards of care can be found in the Provider Handbook.

Providers have been asked to ensure they are meeting the standards of re-accreditation which are listed here:

Maintain a safe environment. Everything must be in good repair. Maintain cleanliness.



-Diplomas, degrees, certificates of qualifications should be posted or placed in portfolio  
Keep your first aid valid and posted or placed in your portfolio

Children need daily outdoor play. Plan for outdoor play on your flowchart.

-Stay up to date with health and safety recommendations—put them into practice in your home  
-Seek training regarding health and safety by reading and taking courses  
-Share latest info with families

Fans must have covers, and heaters must be inaccessible to children

Post your menu and serve what is listed. Include 2 food groups at snack and 4 food groups at lunch. Serve 100% juice not mixes. Serve meals at regular times each day.



Daily safety inspections indoors and outdoors-post checklist  
-Gates in place to protect children from stairs  
-Cover electrical outlets  
-Floor coverings are attached to the floor or backed with non-skid material

Use safe disinfecting procedures - use bleach 1:50 to disinfect kitchen, bathroom, and toys. Wash bedding weekly. Proper hand washing for providers and children: before handling food, before and after eating, after toileting and diapering, after outdoor play, messy play and whenever soiled by coughing, sneezing, and nose wiping.



Post children's emergency phone numbers, post allergies, know your role in an emergency, post evacuation procedures—emergency procedures form and floor plan

*Practice makes perfect! Ensure you are following all the above procedures in your home.*



**Best Practice: Nassra Mohamed** takes the children downstairs to the laundry room in her apartment building to experience messy play. She puts smocks on the children to keep them dry and clean. She places a large container of water on the floor containing water toys for the children to explore.

She tapes large cardboard to the dryer for painting. The children use paint brushes large and small, and sponges to paint on the cardboard. She makes a print for each child to keep by placing papers on top of the paint and removing the paper. When finished, the children wash their hands in the sink. Nassra gives the children toys to play with while she cleans up.

While playing outdoors in December, Nassra sprinkled food coloring on a snow bank. The wind blew and spread the food coloring beautifully across the snow. The children made small blue snowmen with the coloured snow.



